

POWER SYSTEMS & CONTROLS

THE POWER IS ON!

ELECTRICAL/MECHANICAL ASSEMBLER

JOB DESCRIPTION:

Richmond based Manufacturer looking for multiple Electrical/Mechanical Assemblers to join our Manufacturing Department.



REQUIREMENTS:

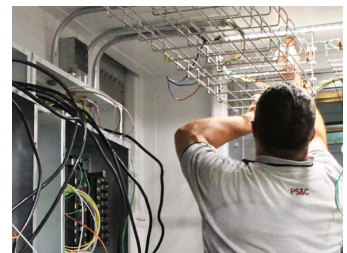
- Must be a U.S. citizen
- Candidate must have 7 years of relevant experience with 2 of the trades listed: electrical, plumbing, HVAC, and/or carpentry fields
- Electrical skills include building to blueprints, reading schematics, and the ability to cut/bend/thread pipe
- HVAC experience includes servicing commercial HVAC equipment, installing thermostats, AC's, and ductwork
- Plumbing experience includes commercial and residential knowledge
- Must have experience with hand and power tools
- Detail oriented
- Strong organizational skills are mandatory
- Must have excellent communication skills
- The candidate must have reliable transportation to and from work including a valid driver's license
- Must have a working knowledge of the NEC



BENEFITS OF WORKING @ PS&C:

PS&C offers the opportunity to carve out your own professional destiny! We facilitate enhancement of one's skill set, while providing the structure to strengthen your talents and diversity within yourself, as well as our product lines. As a valued team member, we recognize that everyone is essential to success. Each employee's individual talents are utilized. Big things are happening at our company! PS&C is expanding its facility to meet supplier demand, which includes a fully air conditioned and heated workspace.

- Expert skills are recognized and promoted
- Competitive Base Pay, Holidays, Vacation, and PTO
- ESOP (Employee Stock Ownership Program), including 401k match (1/2% for each 1% up to 3% Max Match)
- Medical, Prescription and Dental Insurance: Free high deductible plan, or a Premium Plan with reduced payroll deduction options
- Clothing/work boot allowance
- Bonus program available
- Additional vacation offered after 10 and 20 year employment (1 week)
- E. O. E; drug and smoke free environment; with criminal background checks



PS&C